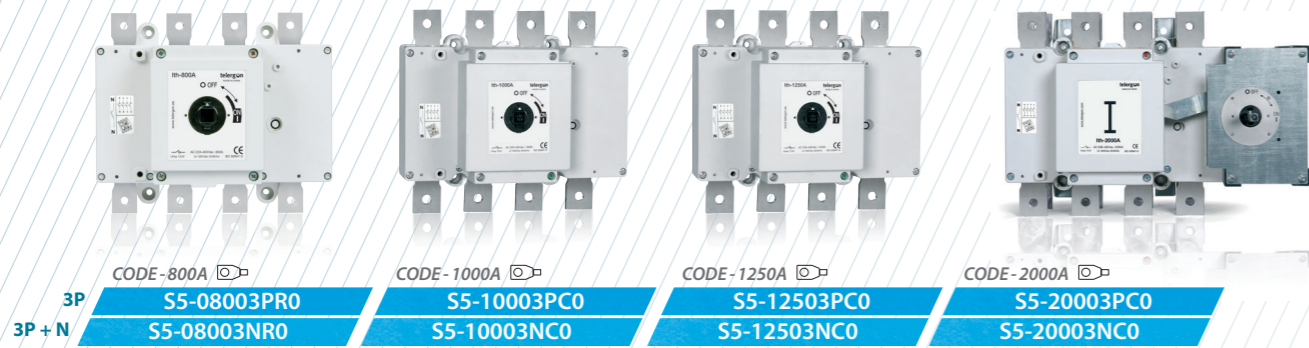


S5 AC Switch - disconnecter base mounting 3P - 3P+N

Size 3

A 800|1000|1250|2000



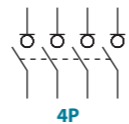
Technical information

According to IEC 60947-3



			800	1000	1250	2000
Rated thermal current I _{th} in ambient at	40 °C	A	800	1000	1250	2000
	50 °C	A	800	1000	1125	1800
	60 °C	A	800	900	900	1600
Rated insulation voltage U _i		V	1000	1000	1000	1000
		kV	12	12	12	12
AC rated operational current I _e (Rated operational frequency 50/60 Hz)	U _e 400V AC21A	A	800	1000	1250	2000
	U _e 400V AC22A	A	800	1000	1250	2000 ^(*)
	U _e 400V AC23A	A	800	1000	1000	-
Rated breaking capacity	400V AC23	A	6400	8000	8000	6000
Rated making capacity	400V AC23	A	8000	10000	10000	6000

			800	1000	1250	2000
Short - circuit behaviour						
Rated short-circuit making capacity I _{cm} kA (peak)			60	60	60	80
Rated short-time withstand current I _{cw} kA rms (1sec.)			25	25	25	38
Mechanical features						
Number of mechanical operations (according to the standards, for other values please consult)	Cycles		3000	3000	3000	3000
Maximum weight 3P	Kg		7	7	7	18,5
Maximum weight 3P+N	Kg		7,6	7,6	7,6	20



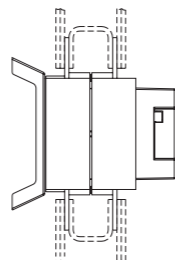
Also available 4P switch - disconnectors under request, please consult

Connection diagram

Connection diagram between front & rear



Bridging links ^(P2)



Accessories



Direct handle
CODE DS-LI31
CODE DS-LI41 (2000 A)



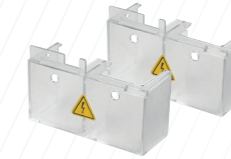
External handle included shaft ^(e1)
IP65
CODE DS-LA31
CODE DS-LA41 (2000 A)



External handle without shaft
IP65
CODE DS-LA33 (for 800-1000-1250A)



Emergency external handle included shaft ^(e1)
IP65
CODE DS-LR31
CODE DS-LR41 (2000 A)



Terminal shrouds
CODE DS-CU31
(1 kit for input or output, 2000 A on frontal side only)



Bridging links ^(P2)
BI-1 2000 A CODE x2 D5LPC32 (4 units)

^(P2) To comply with the operation and electrical features, the bridging links must be assembled to the switch. Please consult.



Auxiliary contacts
1NO+1NC CODE D5LAU01
2NO+2NC CODE D5LAU02
1NO+1NC CODE DS-AU11 (2000 A)
2NO+2NC CODE DS-AU12 (2000 A)

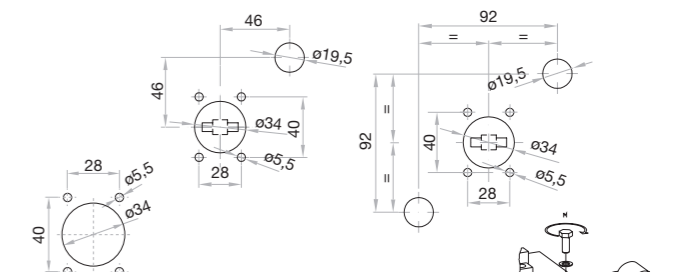
I_e = 16 A (resistive loads)
4 A (inductive loads) at 250 Vac.



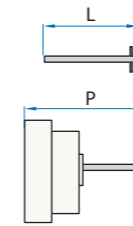
Safety key lock device
Simple CODE DS-CB31
Double CODE DS-CF31

For external handle, lock the handle by means of a key in position "OFF" (under request, in "ON"), the key can only be removed with the handle locked

Door drilling for handle and key lock device
Simple Double



Shafts

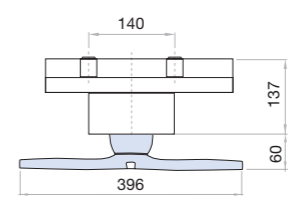
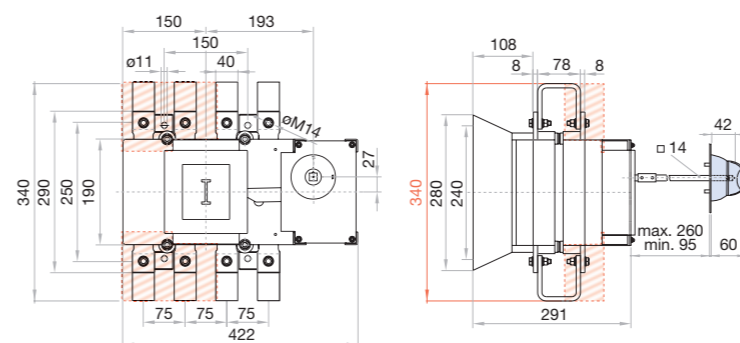
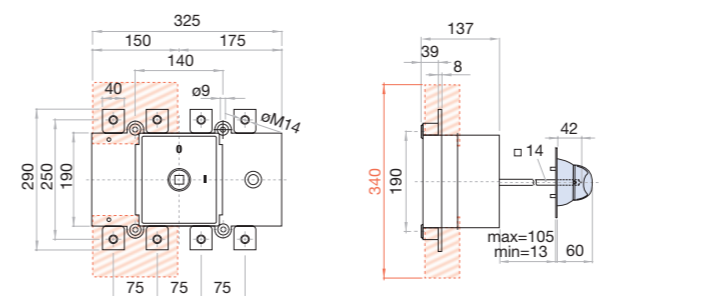


Standard shaft included ^(e1)
L (mm) P (mm)
186 145... 242
(2000 A) 239 145... 242

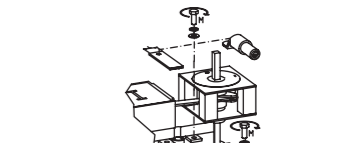
Shaft extensions
Type 1
L (mm) P (mm) CODE
345 145... 411 DS-EP23
(2000 A) 485 145... 244 DS-EP44

Type 2
L (mm) P (mm) CODE
535 145... 600 DS-EP24
(2000 A) 635 145... 600 DS-EP45

Dimensions (mm)



	S max (Cu)	H max (Cu)	L max (Cu)	T	M
800 A	2x240	2x10	50	M14	45
1000 A	2x300				
1250 A					



	S max (Cu)	H max (Cu)	L max (Cu)	T	M
2000 A	4x300	4x10	50	M14	45